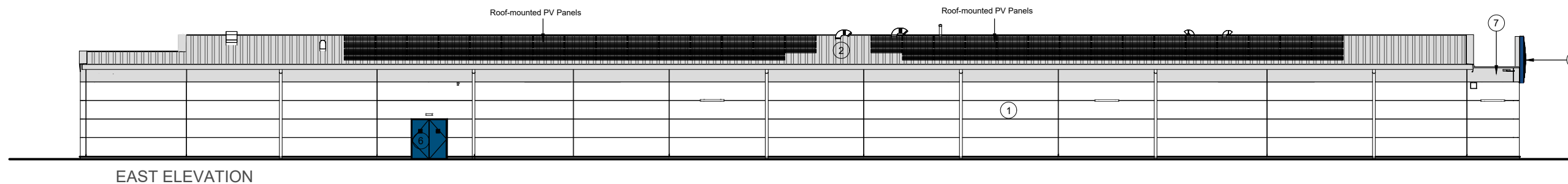
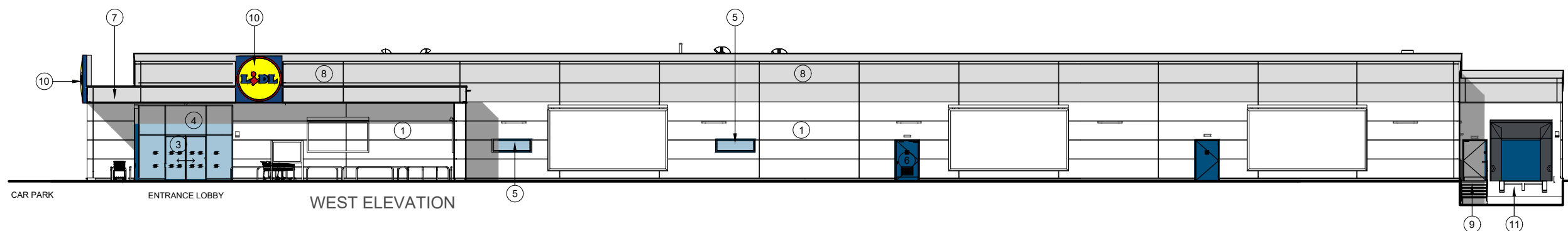




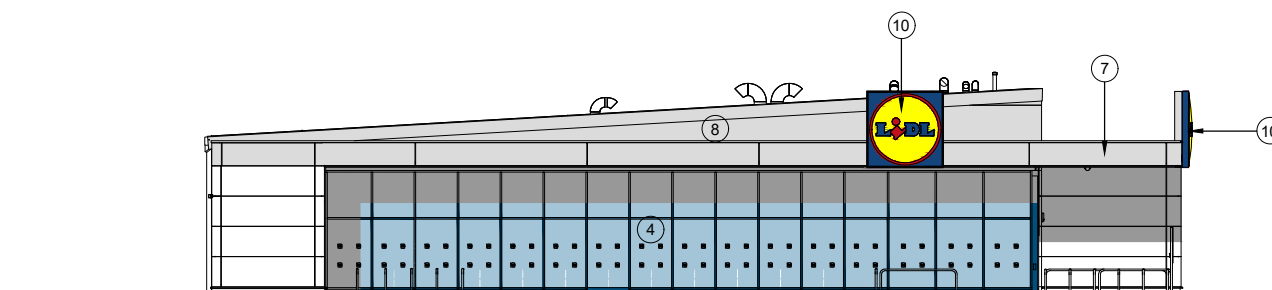
All signage indicative subject to a separate application for advertising consent



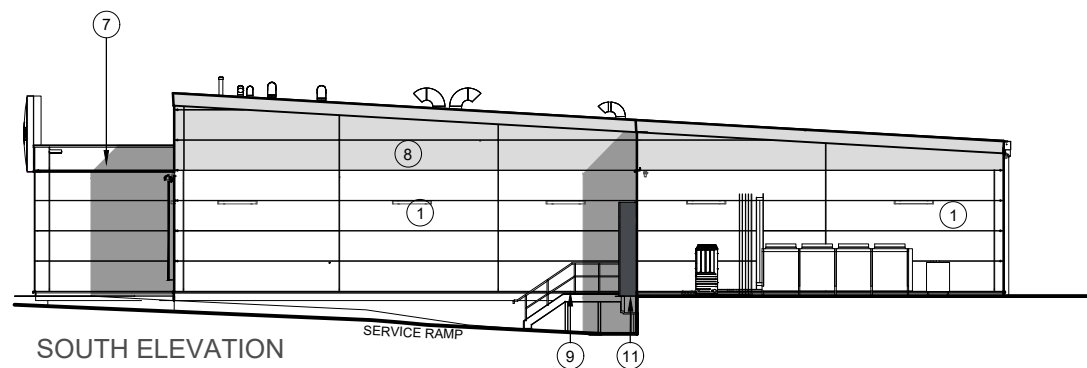
EAST ELEVATION



WEST ELEVATION



NORTH ELEVATION



SOUTH ELEVATION



- ① WALL CLADDING PANELS - METAL INSULATED COMPOSITE PANELS COLOUR WHITE RAL9010
- ② 3° PITCH ROOF, PROFILED COMPOSITE METAL COLOUR ALUMINIUM RAL 9006
- ③ POWDER COATED ALUMINIUM FRAMED GLAZED ENTRANCE LOBBY WITH AUTOMATIC DOORS COLOUR BLUE RAL5010
- ④ POWDER COATED ALUMINIUM FRAMED GLAZED SHOPFRONT COLOUR: BLUE RAL5010
- ⑤ POWDER COATED ALUMINIUM FRAMED WINDOWS COLOUR: BLUE RAL5010
- ⑥ POWDER COATED STEEL DOOR COLOUR: BLUE RAL5010
- ⑦ EAVES, SOFFITS AND FASCIA PANELS COLOUR ALUMINIUM RAL9006
- ⑧ WALL CLADDING PANELS - METAL INSULATED COMPOSITE PANELS COLOUR ALUMINIUM RAL9006
- ⑨ STEEL STEPS AND BALUSTRADE PAINTED GREY RAL 7024
- ⑩ INTERNALLY ILLUMINATED LIDL SIGNAGE
- ⑪ MINI DOCK LEVELLER

client

Lidl GB Ltd

project

New Lidl Store
Mendham Lane
Harleston

drawing

Elevations

scale

1:125@A1, 1:250@A3

date

July 21

drawn

RM

checked

drawing no.

7910L-06

revision

john roberts architects



1 James Street . Lincoln . LN2 1GD
T: 01522 53441 . F: 01522 512888
E: contact@jraarchitects.co.uk
www.jraarchitects.co.uk